

# AKCHART

For details on hours, directions, exhibits, and more, visit [www.AKCHO.org](http://www.AKCHO.org).

Listings in gray are destinations. Many destinations may be reached via Metro bus. See Metro's website: [transit.metrokc.gov](http://transit.metrokc.gov) or call 1-800-542-7876.

	<i>Collections</i>	<i>Education Trunks</i>	<i>Exhibits</i>	<i>Family/Youth Programs</i>	<i>Gardens</i>	<i>Public Meetings</i>	<i>Lecture/Film Series</i>	<i>Library/Research Facilities</i>	<i>Membership Benefits</i>	<i>Newsletter</i>	<i>Photo Collection</i>	<i>Publications/Videos</i>	<i>Cafe</i>	<i>Rental Facilities</i>	<i>School Programs</i>	<i>Senior Programs</i>	<i>Specialty Tours/Events</i>	<i>Volunteer Opportunities</i>	<i>Gift Shop</i>	<i>Website</i>
<b>Greater Kent Historical Society</b> 253-854-4330 855 E Smith, Kent, WA 98030	●		●	●	●	●	●	●	●	●	●	●	●	●	●	●	●	●	●	●
<b>Highline Historical Society</b> 206-246-6354 PO Box 317, Seahurst, WA 98062	●		●					●	●	●	●							●	●	●
<b>Historic Preservation Program (UW)</b> 206-543-5996 P.O. Box 355740, Seattle, WA 98195							●	●			●									●
<b>Historical Society of Federal Way</b> 253-946-4243 31850 7th Ave SW, Federal Way, WA 98023	●		●				●	●	●	●	●			●	●	●	●	●	●	●
<b>History House of Greater Seattle</b> 206-675-8875 790 N 34th Street, Seattle, WA 98103	●		●							●			●				●	●	●	●
<b>History Ink (HistoryLink.org)</b> 206-447-8140 1411 4th Ave, Suite 803, Seattle, WA 98101									●		●			●				●	●	●
<b>Issaquah Historical Society</b> 425-392-3500 165 SE Andrews Ave, Issaquah, WA 98027	●	●	●	●			●	●	●	●	●			●			●	●	●	●
<b>Jack Straw Productions</b> 206-634-0919 4261 Roosevelt Way NE, Seattle, WA 98105			●	●							●			●				●	●	●

<b>Kenmore Heritage Society</b> 425-486-8350 PO Box 82027, Kenmore, WA 98028	●					●			●	●	●	●			●					●
<b>King County Archives</b> 206-205-1398 1215 E Fir Street, Seattle, WA 98122								●			●									●
<b>Maple Valley Historical Society</b> 425-432-3470 23015 SE 216th Way, Maple Valley, WA 98038	●	●	●		●			●	●	●	●			●		●	●	●	●	●
<b>Mercer Island Historical Society</b> 425-286-0876 P.O. Box 11, Mercer Island, WA 98040					●				●					●				●	●	●
<b>Metro Employers Historic Vehicle Assn</b> 201 S. Jackson St., Seattle, WA 98104																●				●
<b>Museum of Communications</b> 206-767-3012 7000 E Marginal Way S, Seattle, WA 98108	●									●	●								●	●
<b>Museum of History and Industry</b> 206-324-1126 2700 24th Ave. E., Seattle, WA 98112	●	●	●	●			●	●	●	●	●		●	●	●	●	●	●	●	●
<b>National Archives &amp; Records Administration (NARA), Pacific Alaska Region</b> 206-336-5142 6125 Sand Point Way NE, Seattle, WA 98115	●		●				●	●						●			●	●	●	●
<b>Neely Mansion Association</b> 253-833-9484 12303 Auburn-Black Diamond Rd, Auburn, WA 98071	●		●	●	●				●	●	●		●	●	●	●	●	●	●	●
<b>Nelsen Historical Trust</b> 206-755-9932 15643 W Valley Hwy, Tukwila, WA 98188	●	●			●				●		●					●	●	●	●	●
<b>Nordic Heritage Museum</b> 206-789-5707 3014 NW 67th Street, Seattle, WA 98117	●	●	●	●	●			●	●	●	●	●		●	●			●	●	●
<b>Northwest Railway Museum</b> 425-888-3030 38625 SE King St, Snoqualmie, WA 98065	●		●	●				●	●	●	●		●	●				●	●	●

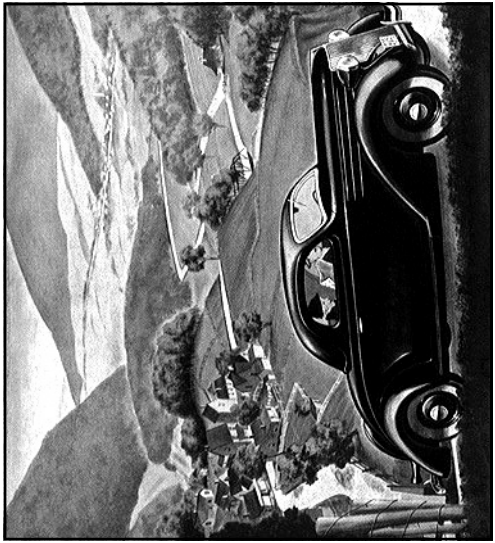
<b>Pacific Northwest Historians Guild</b> 206-938-7687 P.O. Box 85457, Seattle, WA 98145						●	●			●							●			●
<b>Pioneer Association of Washington</b> 425-748-6393 1642 43rd Ave. E., Seattle, WA 98112	●		●					●	●	●								●		
<b>Puget Sound Maritime Hist. Society</b> 206-9791126 3823 N Frace St., Tacoma, WA 98407	●				●		●		●	●	●							●		●
<b>Puget Sound Welsh Association</b> 206-524-0854 P.O. Box 27725, Seattle, WA 98165			●		●				●	●				●				●		●
<b>Queen Anne Historical Society</b> 206-378-1618 3637 35th Ave. W., Seattle, WA 98199	●				●				●	●						●	●	●	●	●
<b>Rainier Valley Historical Society</b> 206-723-1663 3710 S. Ferdinand St., Seattle, WA 98118	●		●		●		●	●	●	●	●							●	●	●
<b>Redmond Historical Society</b> 425-885-2919 16600 NE 80th Room 106, Redmond, WA 98052	●				●		●		●	●	●							●	●	●
<b>Renton Historical Society</b> 425-255-2330 235 Mill Ave S, Renton, WA 98057	●	●	●	●			●	●	●	●				●				●	●	●
<b>Seattle Area Archivists</b> 206-684-0964 P.O. Box 95321, Seattle, WA 98145																				●
<b>Seattle-King County Military Hist. Society</b> 206-523-4831 9161 Matthews Ave NE, Seattle, WA 98115	●									●										
<b>Skykomish Historical Society</b> 360-596-9037 110 R.R. Ave W., Skykomish, WA 98288	●		●						●	●								●		●
<b>Snoqualmie Valley Historical Society</b> 425-888-1859 329 Bendigo Blvd S, North Bend, WA 98045	●	●	●						●	●	●			●				●	●	●
<b>South King Cty Genealogical Soc</b> 206-243-6217 P.O. Box 3174, Kent, WA 98089					●				●		●							●	●	●

<b>Suquamish Tribe/Museum</b> 360-394-8495 P.O. Box 498, Suquamish, WA 98392	●	●	●						●	●	●			●				●	●	●
<b>SW Seattle Historical Society</b> 206-938-5293 3003 61st Ave. SW, Seattle, WA 98116	●	●	●	●	●	●	●	●	●	●	●	●	●	●	●	●	●	●	●	●
<b>Tolt Historical Society</b> 425-333-4405 9321 318th Place NE, Carnation, WA 98014			●		●															●
<b>Tukwila Historical Society</b> 206-246-2165 14475 59th Ave S, Tukwila, WA 98168	●		●		●				●	●								●	●	
<b>Vashon-Maury Island Heritage Association</b> 206-463-7808 10105 SW Bank Rd, Vashon, WA 98070	●		●		●		●	●	●	●		●						●	●	●
<b>Volunteers for Outdoor WA/ Iron Goat Trail Project</b> 206-282-8737 8511 15th Ave NE #206, Seattle, WA 98115			●	●		●			●	●	●			●	●			●	●	●
<b>Washington St Jewish Historical Soc</b> 206-774-2277 2031 3rd Ave., Seattle, WA 98121	●	●	●	●		●	●	●	●	●	●							●	●	●
<b>White River Valley Museum</b> 253-288-7433 918 H Street SE, Auburn, WA 98002	●	●	●	●		●	●	●	●	●	●		●	●	●	●	●	●	●	●
<b>Wing Luke Asian Museum</b> 206-623-5124 Ext. 117 719 King St., Seattle, WA 98104	●	●	●	●			●	●	●	●			●	●				●	●	●
<b>Woodinville Heritage Society</b> 425-483-8270 P.O. Box 216, Woodinville, WA 98072						●			●	●	●									●

# AKCHART

The At-a-glance  
King County  
Historical Associations  
Resource Table

Showing the organizations, museums, and destinations that provide historic preservation, education, and research facilities.



Prepared and distributed by the Association of King County Historical Organizations (AKCHO)

## AKCHART

For details on hours, directions, exhibits, and more, visit [www.akcho.org](http://www.akcho.org). Listings in gray are destinations. Many destinations may be reached via Metro bus. See Metro's website: [transit.metrokc.gov](http://transit.metrokc.gov) or call 1-800-542-7876.

AKCHO	4Culture 206-296-6888	101 Preontaine Place SW, Seattle, WA 98104	Alderwood Manor Heritage Assn 206-296-8688	19906 Poplar Way, Lynnwood, WA 98036	Ballard Historical Society 206-784-9769	PO Box 17775, Seattle, WA 98127	Black Diamond Historical Society 360-886-2142	32627 Railroad Ave, Black Diamond, WA 98010	Bothell Historical Museum Society 425-488-8408	9919 NE 180th, Bothell, WA 98011	Broadview Historical Society 206-363-7295	12009 1st Ave NW, Seattle, WA 98177	Broadway High School Archives 206-523-8179	1701 Broadway—BR4180, Seattle, WA 98122	Cedar River Watershed Education Ctr 206-386-1584	19901 Cedar Falls Road SE, North Bend, WA 98045
Website	•	•	•	•	•	•	•	•	•	•	•	•	•	•	•	•
Gift Shop	•	•	•	•	•	•	•	•	•	•	•	•	•	•	•	•
Volunteer Opportunities	•	•	•	•	•	•	•	•	•	•	•	•	•	•	•	•
Specialty Tours/Events	•	•	•	•	•	•	•	•	•	•	•	•	•	•	•	•
Senior Programs	•	•	•	•	•	•	•	•	•	•	•	•	•	•	•	•
School Programs	•	•	•	•	•	•	•	•	•	•	•	•	•	•	•	•
Rental Facilities	•	•	•	•	•	•	•	•	•	•	•	•	•	•	•	•
Café	•	•	•	•	•	•	•	•	•	•	•	•	•	•	•	•
Publications/Videos	•	•	•	•	•	•	•	•	•	•	•	•	•	•	•	•
Photo Collection	•	•	•	•	•	•	•	•	•	•	•	•	•	•	•	•
Membership Benefits	•	•	•	•	•	•	•	•	•	•	•	•	•	•	•	•
Newsletter	•	•	•	•	•	•	•	•	•	•	•	•	•	•	•	•
Library/Research Facilities	•	•	•	•	•	•	•	•	•	•	•	•	•	•	•	•
Lecture/Film Series	•	•	•	•	•	•	•	•	•	•	•	•	•	•	•	•
Public Meetings	•	•	•	•	•	•	•	•	•	•	•	•	•	•	•	•
Gardens	•	•	•	•	•	•	•	•	•	•	•	•	•	•	•	•
Family/Youth Programs	•	•	•	•	•	•	•	•	•	•	•	•	•	•	•	•
Exhibits	•	•	•	•	•	•	•	•	•	•	•	•	•	•	•	•
Education Trunks	•	•	•	•	•	•	•	•	•	•	•	•	•	•	•	•
Collections	•	•	•	•	•	•	•	•	•	•	•	•	•	•	•	•

Center for Wooden Boats 206-382-2628	1010 Valley Street, Seattle, WA 98109	•	•	•	•	•	•	•	•	•	•	•	•	•	•	•
City of Bothell Landmark Pres. Board 425-486-8152	9654 NE 182nd Street, Bothell, WA 98011	•	•	•	•	•	•	•	•	•	•	•	•	•	•	•
Daughters of the Pioneers of WA 206-232-8516	1642 43rd Ave E, Seattle, WA 98112	•	•	•	•	•	•	•	•	•	•	•	•	•	•	•
DENSHO: The Japanese American Legacy Project	1416 S. Jackson St., Seattle, WA 98144	•	•	•	•	•	•	•	•	•	•	•	•	•	•	•
Des Moines Historical Society 206-450-2055	730 S 225th Street, Des Moines, WA 98198	•	•	•	•	•	•	•	•	•	•	•	•	•	•	•
Discovery Modelers Education Center 206-282-0985	860 Terry Ave N, Room 239, Seattle, WA 98109	•	•	•	•	•	•	•	•	•	•	•	•	•	•	•
DoCoMoWea 206-297-8036	P.O. Box 70245, Seattle, WA 98127	•	•	•	•	•	•	•	•	•	•	•	•	•	•	•
B Campus Vitus: Doc Maynard Chp 425-835-0430	P.O. Box 248, Lynnwood, WA 98046	•	•	•	•	•	•	•	•	•	•	•	•	•	•	•
Eastside Heritage Center 425-450-1049	11660 Main Street, Bellevue, WA 98015	•	•	•	•	•	•	•	•	•	•	•	•	•	•	•
Fall City Historical Society 206-999-2022	P.O. Box 293 Fall City, WA 98024	•	•	•	•	•	•	•	•	•	•	•	•	•	•	•
Friends of Seattle's Olmsted Parks 206-324-0858	P.O. Box 9884, Seattle, WA 98109	•	•	•	•	•	•	•	•	•	•	•	•	•	•	•
Georgetown Powerplant Museum 206-996-3152	6511 Ellis Ave S., Seattle, WA 98108	•	•	•	•	•	•	•	•	•	•	•	•	•	•	•