

## WHO BELONGS

King County's history museums and heritage organizations exist to preserve, show, and tell what has happened in the past. They give us pride of place. In many of our towns, the historical museum is the only cultural center in the community.



Official postcard, Alaska-Yukon-Pacific Exposition, 1909.  
Photo courtesy Museum of History & Industry.

In addition to receiving AKCHO's monthly e-newsletter, the *Heritage Advisor*, AKCHO members are invited to attend monthly meetings and workshops that focus on the skills necessary to define our region as a leader in heritage and historic preservation.

Member organizations have the opportunity to be featured in the AKCHART (At-a-glance King County Historical Associations Resource Table) that is distributed to community groups and centers, government entities and tourist venues.

Organizations are also invited to host monthly meetings so that they may share their work with other AKCHO members.

Finally, members benefit from AKCHO's established reputation of successfully advocating for heritage and preservation needs before city, county and state legislative bodies.

## AWARDS

Each year, AKCHO honors excellence and commitment to King County history through its Awards Program.

Awards are given for exhibits, special projects, volunteerism, leadership, education, publications, youth contributions and heritage advocacy.



Left:  
Phil Flash, winner,  
Willard Jue  
Memorial Award  
for volunteerism,  
2008.



Right:  
AKCHO Awards  
ceremony,  
April 2008.

*"The approach to learning about the past promoted by local historic preservation groups strengthens our students' ability to participate in our democracy."*

Caleb Perkins, Office of Superintendent of  
Public Instruction, Washington State

Activities of AKCHO are supported  
in part by 4Culture and  
King County Lodging Tax revenue.



Photo courtesy Eastside Heritage Center

**AKCHO**  
P.O. Box 3257  
Seattle, WA 98114  
[www.AKCHO.org](http://www.AKCHO.org)

## WHO WE ARE

AKCHO was incorporated in 1977 as a forum available to all who work in the world of heritage preservation. Volunteers, preservation professionals, developers, and communities took new pride in the heritage landscape and many new community heritage groups found homes in the lovely mansions, depots, churches, public halls, and commercial buildings rescued from an uncertain future.

Right:  
Neely Mansion,  
Green River  
Valley, built in  
1894.

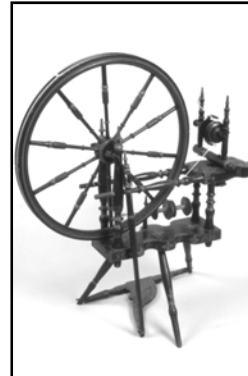


Left:  
Issaquah Depot,  
built in 1889.

Now over 75 organizations strong, with the added support of 74 individual members, AKCHO continues to provide a meeting place of ideas and a forum for the issues that confront museums and heritage groups. More than stewards of the past, AKCHO's members are a vibrant group assuring a place for preservation in the future. AKCHO facilitates the communication, professional standards, and funding of heritage groups.

## WHAT WE DO

- Coordinate local historical and heritage organizations for mutual assistance.
- Establish and promote minimum standards for the organization and operation of historical organizations.
- Promote public access to history and heritage resources in King County through the documentation, collection, preservation, exhibition and interpretation activities of its member organizations.
- Develop public policy favorable to King County history and heritage at the county, municipal and state levels of government.
- Stimulate public awareness of and involvement in King County history and heritage activities.



Norwegian spinning wheel,  
Nordic Heritage Museum.



Loggers with ox team.  
Photo courtesy White River Valley Museum.

## Membership Form

AKCHO Memberships are for one year, beginning January 1 and expiring December 31 of that same year.

### MEMBERSHIP TYPE:

- Organization** \$35.00     **Individual** \$15.00  
 Renewal     New Membership

NAME \_\_\_\_\_

ORGANIZATION \_\_\_\_\_

ADDRESS \_\_\_\_\_

CITY / STATE / ZIP CODE \_\_\_\_\_

PHONE \_\_\_\_\_ FAX \_\_\_\_\_

EMAIL \_\_\_\_\_

WEBSITE \_\_\_\_\_

### PAYMENT INFORMATION:

- Check (make checks payable to AKCHO)     Cash

Ad'd'l Donation: \_\_\_\_\_ Total Enclosed: \_\_\_\_\_

My company will MATCH my gift: \_\_\_\_\_  
COMPANY NAME

AKCHO is a 501 (c)(3) charitable organization.

### FOR ORGANIZATION MEMBERS ONLY:

Does your organization provide the following?

Please check (x) all that apply:

- |  |   |
|--|---|
| <input type="checkbox"/> Destination site            | <input type="checkbox"/> Lecture/Film Series  |
| <input type="checkbox"/> Rental Facilities           | <input type="checkbox"/> Collections          |
| <input type="checkbox"/> Library/Research Facilities | <input type="checkbox"/> School Programs      |
| <input type="checkbox"/> Education Trunks            | <input type="checkbox"/> Membership Benefits  |
| <input type="checkbox"/> Senior Programs             | <input type="checkbox"/> Exhibits             |
| <input type="checkbox"/> Newsletter                  | <input type="checkbox"/> Special Tours/Events |
| <input type="checkbox"/> Family/Youth Programs       | <input type="checkbox"/> Photo Collection     |
| <input type="checkbox"/> Volunteer Opportunities     | <input type="checkbox"/> Gardens              |
| <input type="checkbox"/> Publications/Videos         | <input type="checkbox"/> Gift Shop            |
| <input type="checkbox"/> Regular Public Meetings     | <input type="checkbox"/> Café                 |
| <input type="checkbox"/> Website                     |   |

### PLEASE MAIL THIS FORM AND PAYMENT TO:

AKCHO  
 PO Box 3257  
 Seattle, WA 98114  
 www.AKCHO.org